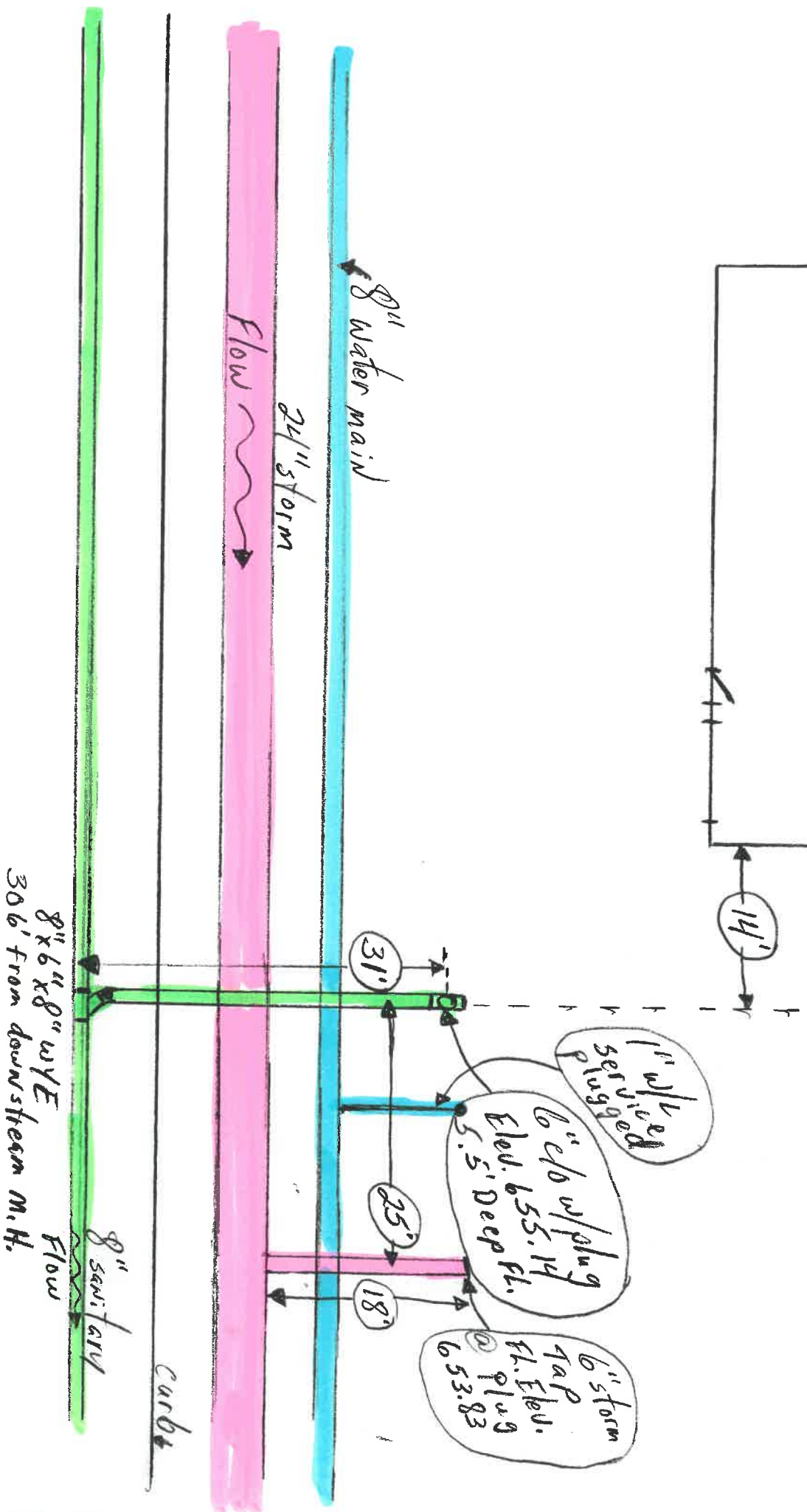


#738
Stout St.

Pole Barn

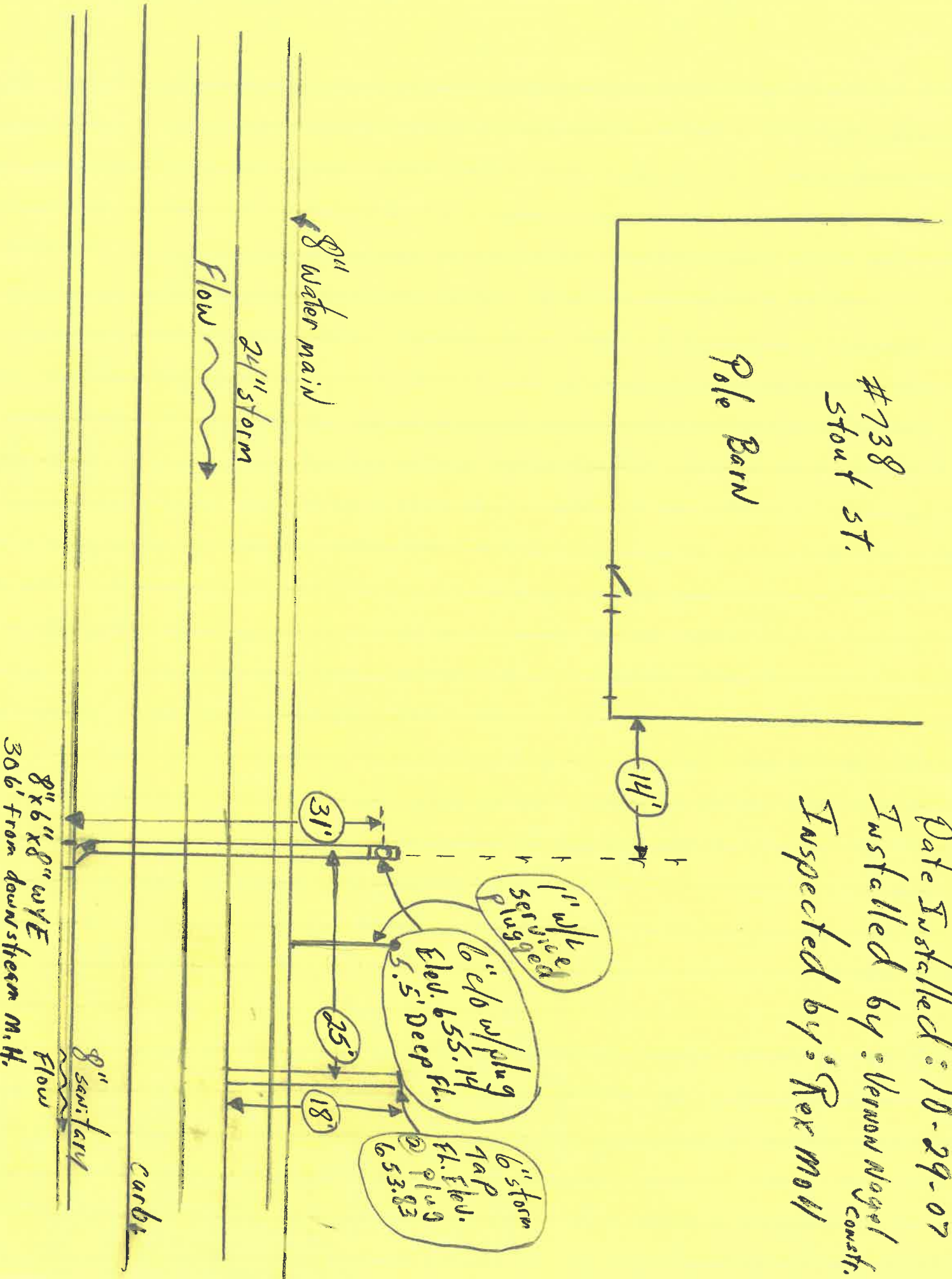
Date Installed: 10-29-07
Installed by: Vernon Nagel Constr.
Inspected by: Rex Moll



#738
5404 ST.

Pole Barn

Date Installed: 10-29-07
Installed by: Vernon Noyel const.
Inspected by: Rex Mott



8" water main

24" storm
Flow

14"

1" w/ lead
serviced
plug

6" dia w/ plug
Elev. 655.14
5.5' Deep Fl.

31"

25"

18"

6" storm
7A P. Elev.
Fl. Plug
653.83

8" x 6" x 8" wye
306' from downstream M.H.

8" sanitary
Flow

curb